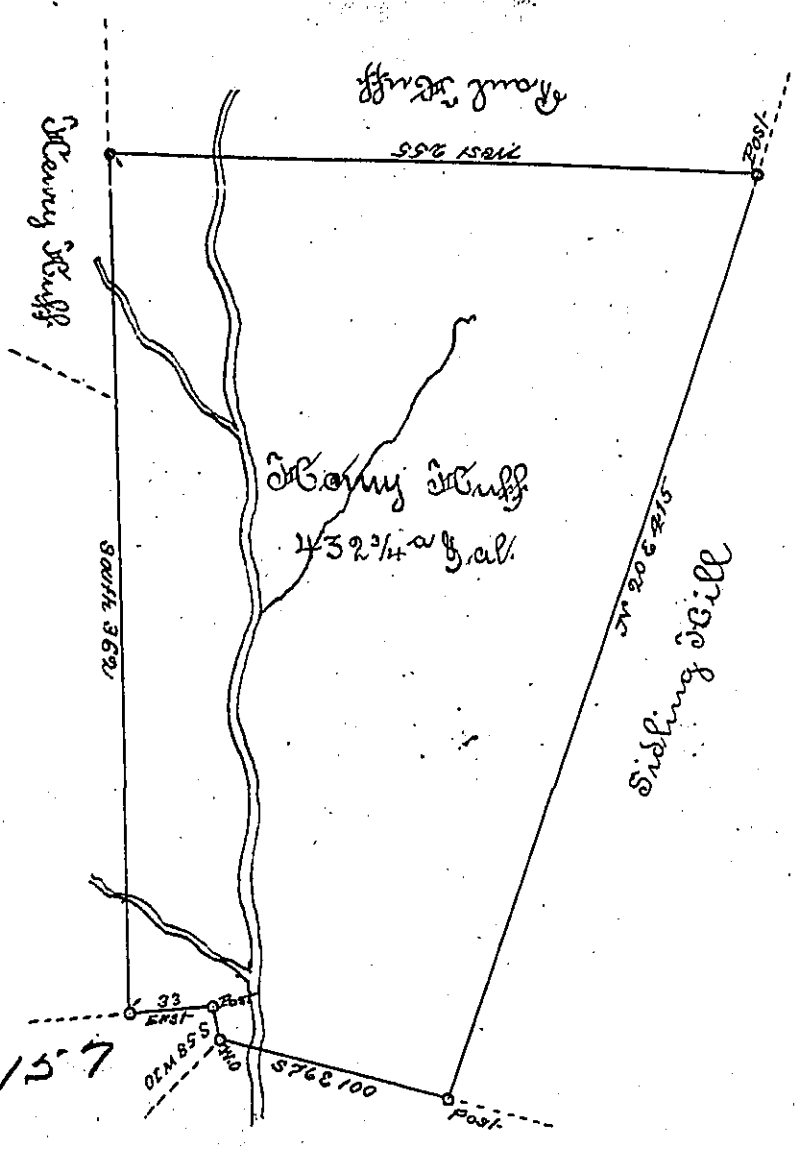


Pg 152

C-90-168

C-90-167

C-90-157



Situate on Stonollaway Creek in Bethel Township, Bedford County, Containing
 432 3/4^{ac} acres with the usual allowance of six per cent for roads, &c. Surveyed for
 Stoney Creek the 28th Day of October 1894 on warrant dated the 21st Day of February
 1894 ~

Mr. George Woods, D. S.

Examined by me, December 15th 1808 ~

To Samuel Cochran Esq^r
 Surveyor General

John Anderson
 Deputy Surveyor

IN TESTIMONY that the above is a copy of the original remaining on file in the
 Department of Internal Affairs of Pennsylvania, made con-
 formably to an Act of Assembly approved the 16th day of
 February, 1833, I have hereunto set my Hand and caused
 the Seal of said Department to be affixed at Harrisburg, this

Twentieth day of August 1894

W. J. Stewart
 Secretary of Internal Affairs.